



Worried about a child?

Child Protection Information for parents

(Makaton Version)

Are you worried about a child or young person you know ?

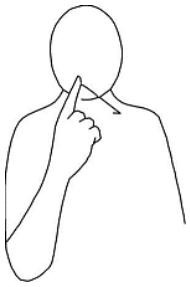
The diagram illustrates the sign language for the sentence "Are you worried about a child or young person you know?". It consists of five main parts:

- Are:** A person pointing their right index finger to the right.
- you:** A person with their right hand held up to their forehead, palm facing forward.
- worried:** A person with both hands held up to their forehead, palms facing forward. Text: "Tense hand Use both hands if very worried".
- about:** A person with their right hand held up to their forehead, palm facing forward. Text: "Hand moves down slightly. For plural repeat placing one next to the other".
- a child or young person:** A person with their right hand held flat, palm facing down, and moving it up and down. Text: "Move hand up or down to show height of child".
- you know?:** A person pointing their right index finger to the right.

Do you think someone might be harming or hurting them ?

The diagram illustrates the sign language for the sentence "Do you think someone might be harming or hurting them?". It consists of five main parts:

- Do:** A person pointing their right index finger to the right.
- you:** A person with their right hand held up to their forehead, palm facing forward.
- think:** A person with their right hand held up to their forehead, palm facing forward.
- someone:** A person with their right hand held up to their forehead, palm facing forward. Text: "Very small circular movement".
- might:** A person with their right hand held up to their forehead, palm facing forward. Text: "Hand moves down slightly".
- be harming or hurting:** A person with their right hand held flat, palm facing down, and moving it up and down. Text: "Position hand at appropriate part of body and shake hand".
- them?:** A person pointing their right index finger to the right.



Speak



to the

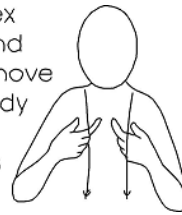
school



Thumb traces cross on outside of arm

health

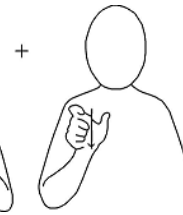
Both index fingers and thumbs move down body from shoulders



Professional

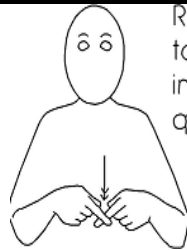
or

social worker

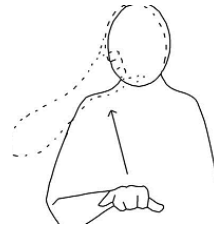


Hand moves down slightly

Is it an emergency?



Right index taps left index twice quickly



call

the



+



Stroke beard

Police

